



Plot Prescription Module

GIS Field Mapping Software



Precision You Can Count On

SMS ADVANCED FEATURES

- File processing from most precision ag displays
- Sorts data by geography
- Generate Crop Plans
- Create, manage and export guidance lines
- Print summary maps, charts and reports
- Write simple prescriptions
- Download/import images
- Query tools to analyze specific areas
- Equation Writing
- Calendar View
- 3D Plotting and Terrain Viewing
- Comparison Analysis
- Multi-Year Averaging
- Network Installation
- Project Management
- Dataset Playback

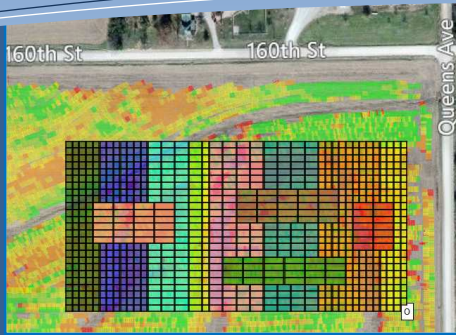
PLOT PRESCRIPTION MODULE

- Define rates by seed count or plant population
- See placement of trips
- Show buffering of setbacks
- Export Plot Prescription field map to Seed Pro 360 planter control system

Also available from ALMACO to meet your plot scouting or other field data logging needs:



Please contact an ALMACO sales representative for more information about any of our products

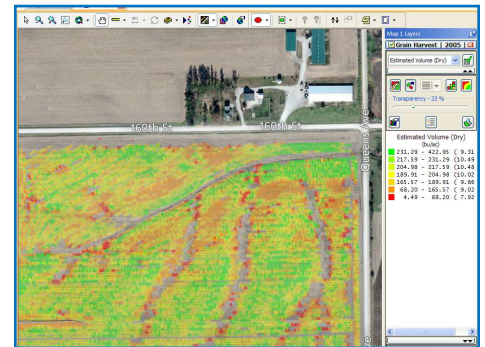
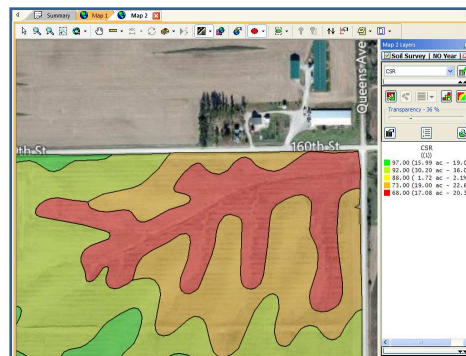


ALMACO has teamed up with Ag Leader® Technology to bring you the latest in field mapping for your Seed Pro 360 planter.

The Plot Prescription Module provides you with the powerful tools you need to make sound decisions to manage your research plots.

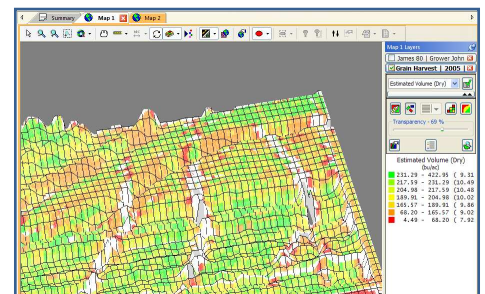
Map All Field Operations

- Analyze harvest data, application records, as planted maps, etc.
- Overlay yield maps with other field operations to determine how field activities affected yield across the field



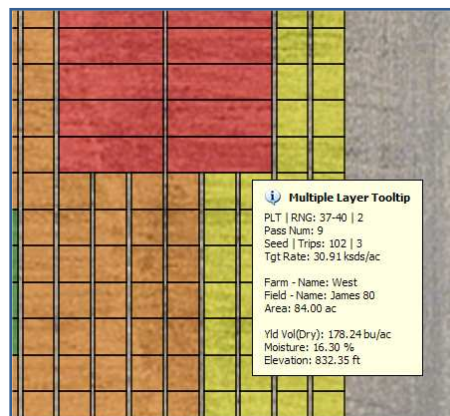
Soil Maps

- Download soil survey data from the USDA for fields located in the U.S.
- Provides data on soil types, water storage, CSR, multiple horizon layers, texture, etc.



3D Terrain View

- Importing data from field operations provides the ability to display the field elevation characteristics in a 3D view



Plot Prescription

- Overlay a Plot Prescription to determine where to plant your higher level experiments
- Assign each range a population & trip count
- Export field map to Seed Pro 360 for hands free population rate changes
- Field map file auto populates GPS coordinates for SkyTrip baseline